



CTL802810L

Optica Series

10W Replaceable LED Module Track Fixture

Catalog No. _____

Type _____

Project _____

Specifications/Features

Fixture

Low wattage, eco-friendly, LED track fixture provides high lumen output. Select from 15°, 25° and 40° beam distributions. Sleek vertical housing design enhances any space. Die cast aluminum housing. Integral ON/OFF switch and track polarity indicator are standard.

Lamp

6) 1.6W LEDs, 12V constant voltage input; 10W total.
Cool White Color Temperature: 6000K.
Neutral White Color Temperature: 4000K.
Warm White Color Temperature: 3000K.
Replacement lamp modules available. Contact factory.

Electrical

Electronic Transformer, 120W primary and 12V secondary, 60Hz.
Input current: .10A

Warranty

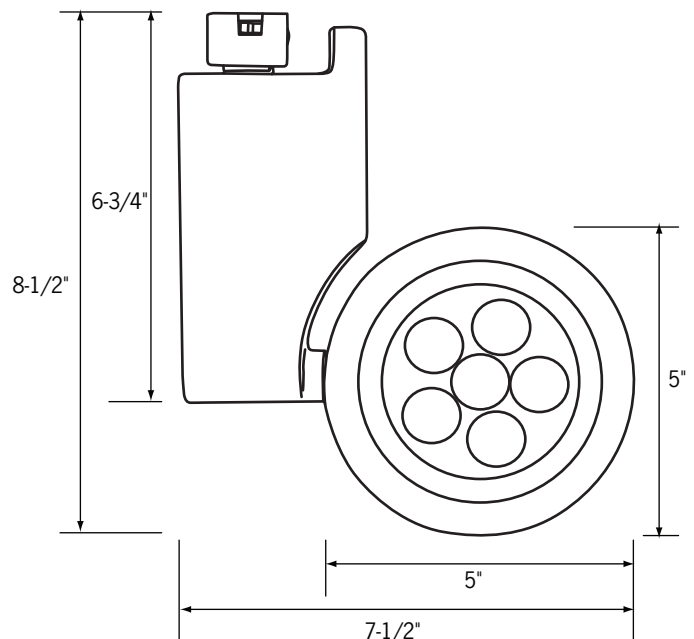
This complete fixture is covered by Con-Tech's full five (5) year replacement guarantee after date of purchase.

Listing

cULus listed. Suitable for dry locations.
RoHS compliant, contains no lead or mercury.

Fixture Compatibility

Standard Con-Tech track fixtures are UL Listed as-is for use with Con-Tech's many track systems, as well as with Juno®¹ Lighting track. By changing the prefix in the part number, Con-Tech can install inserts which make our fixtures compatible with other manufacturers. Replace "CTL" with "HTL" for Halo®² track, "LTL" for Lightolier®³ track, and "PTL" for Capri®⁴ track. For more information, please consult our factory.



Ordering Information

Example Order: -

Track System	Fixture	Beam Distribution	Color Temperature	Finish
<input type="text"/>	<input type="text"/>	<input type="text"/>	<input type="text"/>	<input type="text"/>
CTL - Con-Tech HTL - Halo LTL - Lightolier PTL - Capri	802810L	15 - 15° Beam 25 - 25° Beam 40 - 40° Beam	3 - Warm White (3000K) 4 - Neutral White (4000K) 6 - Cool White (6000K)	B - Black P - White S - Silver

1. Juno is a registered trademark of Juno Lighting
2. Halo is a registered trademark of Cooper Lighting
3. Lightolier is a registered trademark of Philips Lighting
4. Capri is a registered trademark of Philips Lighting



CTL802810L

Optica Series
10W Replaceable LED Module Track Fixture

Catalog No. _____

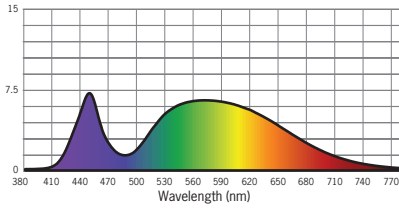
Type _____

Project _____

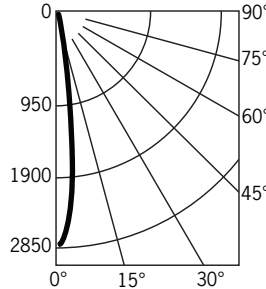
AR111 LED Lamp Module Photometrics

10LEDAR25N: Light Output (Lumens): 413 Total Watts@12V: 10 Lumens Per Watt: 41 Color Rendering Index (CRI)¹: 78 Color Temperature (CCT)²: 4000K

Spectral Power Distribution Chart³



Candela Curve



Candlepower Summary

FROM 0	CANDELA	LUMENS
0	2833	
5	2277	180
15	473	139
25	83	41
35	25	16
45	15	11
55	11	9
65	8	7
75	4	4
85	1	1
95	0	

Intensity Distribution

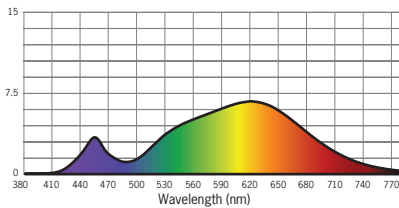
DISTANCE (FT.)	FOOTCANDLES (FC)	BEAM DIAMETER (FT.)
6'	78.7	1.8
8'	44.3	2.4
10'	28.3	3.0
12'	19.7	3.7
14'	14.5	4.3
16'	11.1	4.9

Beam Distribution: 20°

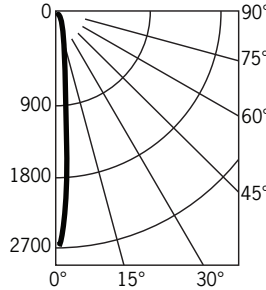
Designed for 50,000 Hour Lamp Life; LM-79 Test No. 64034*

10LEDAR25W: Light Output (Lumens): 343 Total Watts@12V: 10 Lumens Per Watt: 33 Color Rendering Index (CRI)¹: 80 Color Temperature (CCT)²: 3000K

Spectral Power Distribution Chart³



Candela Curve



Candlepower Summary

FROM 0	CANDELA	LUMENS
0	2686	
5	1997	154
15	367	109
25	70	34
35	22	14
45	13	10
55	10	8
65	6	6
75	3	3
85	0	0
95	0	

Intensity Distribution

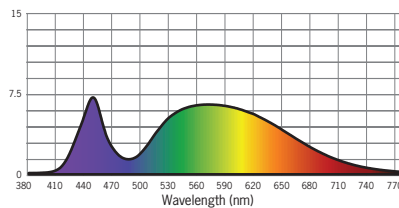
DISTANCE (FT.)	FOOTCANDLES (FC)	BEAM DIAMETER (FT.)
6'	74.6	1.6
8'	42.0	2.2
10'	26.9	2.7
12'	18.7	3.3
14'	13.7	3.8
16'	10.5	4.3

Beam Distribution: 20°

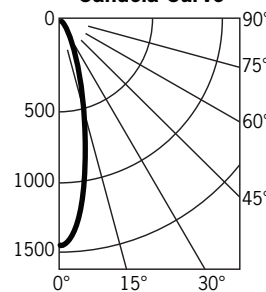
Designed for 50,000 Hour Lamp Life; LM-79 Test No. 64033*

10LEDAR40N: Light Output (Lumens): 352 Total Watts@120V: 10 Lumens Per Watt: 34 Color Rendering Index (CRI)¹: 78 Color Temperature (CCT)²: 4000K

Spectral Power Distribution Chart³



Candela Curve



Candlepower Summary

FROM 0	CANDELA	LUMENS
0	1400	
5	1234	105
15	494	135
25	107	53
35	31	20
45	16	12
55	11	9
65	8	7
75	5	5
85	1	1
95	0	

Intensity Distribution

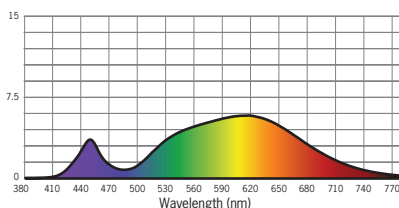
DISTANCE (FT.)	FOOTCANDLES (FC)	BEAM DIAMETER (FT.)
6'	38.9	2.5
8'	21.9	3.3
10'	14.0	4.1
12'	9.7	4.9
14'	7.1	5.7
16'	5.5	6.6

Beam Distribution: 38°

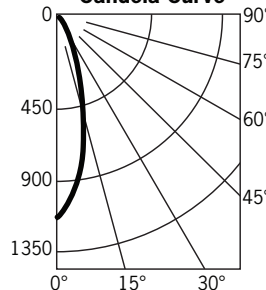
Designed for 50,000 Hour Lamp Life; LM-79 Test No. 64288*

10LEDAR40W: Light Output (Lumens): 300 Total Watts@12V: 10 Lumens Per Watt: 29 Color Rendering Index (CRI)¹: 80 Color Temperature (CCT)²: 3000K

Spectral Power Distribution Chart³



Candela Curve



Candlepower Summary

FROM 0	CANDELA	LUMENS
0	1202	
5	1061	90
15	428	117
25	91	45
35	25	16
45	13	10
55	9	7
65	6	6
75	4	4
85	1	0
95	0	

Intensity Distribution

DISTANCE (FT.)	FOOTCANDLES (FC)	BEAM DIAMETER (FT.)
6'	33.4	2.5
8'	18.8	3.3
10'	12.0	4.1
12'	8.3	4.9
14'	6.1	5.8
16'	4.7	6.6

Beam Distribution: 38°

Designed for 50,000 Hour Lamp Life; LM-79 Test No. 64282*

1. Accuracy of rendering colors
2. Color appearance of light source
3. Colors present within the light source

**Dependent on surrounding temperatures*