

CTS351

Lock-Fit Shade: Theros

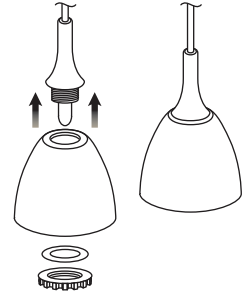
Catalog No. _____

Type _____

Project _____



Orchard Field Glass is a unique collection of pendant shades that combine contemporary shapes and universal colors for virtually any application. These shades are designed for Con-Tech's Lock-Fit pendant fixtures.



Lock-Fit Assembly

See Shade/Pendant Compatibility Chart for specific usage.

Dimensions: 4-1/8" H x 4-1/8" Dia. Glass shown on CRS3296QR pendant.



Satin Blue

CTS351-SB



Satin White

CTS351-SW



Satin Red

CTS351-SR



Satin Yellow

CTS351-SY

Shade/Pendant Compatibility Chart

Shade	Product Line	Pendant Part Number
CTS351	Odyssey Line Voltage Flexible Track	LIR3296
	Quick Release Low Voltage System	CRS3296QR
	Line Voltage Mono-Point	LICM75096



1-847.559.5500

www.con-techlighting.com

All specifications subject to change without notice.