

# CTS354

## Lock-Fit Shade: Aleo

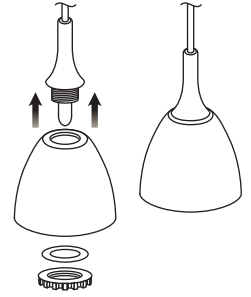
Catalog No. \_\_\_\_\_

Type \_\_\_\_\_

Project \_\_\_\_\_



Orchard Field Glass is a unique collection of pendant shades that combine contemporary shapes and universal colors for virtually any application. These shades are designed for Con-Tech's Lock-Fit pendant fixtures.



Lock-Fit Assembly

See Shade/Pendant Compatibility Chart for specific usage.

**Dimensions: 2-7/8" H x 3-7/16" Dia. Glass shown on CRS3296QR pendant.**



**Satin Blue**

**CTS354-SB**



**Satin Red**

**CTS354-SR**



**Satin Orange**

**CTS354-SO**



**Satin White**

**CTS354-SW**

### Shade/Pendant Compatibility Chart

Shade	Product Line	Pendant Part Number
CTS354	Odyssey Line Voltage Flexible Track	LIR3296
	Quick Release Low Voltage System	CRS3296QR
	Line Voltage Mono-Point	LICM75096

