

RL20-IC

4" Line Voltage Incandescent Insulated Ceiling/StopAire® Rated Recessed Downlight

Specifications/Features

Housing/Mounting

May be used in direct contact with ceiling insulation in dry wall, plaster or suspended ceilings. Will work with ceiling thickness from 1/2" to 1-1/2".

Conforms to Washington State Energy Code (WSEC) for low air infiltration.

Dual extension hanger bars adjustable for 16" to 24" center joists.

Nailer bar hangers for easy installation. Integral holding spikes for convenient mounting.

Hanger bars may be extended to rest on T-bar grid ceilings. Optional clip-on T-bar hangers are also available.

Lamp/Electrical

Input Voltage: 120V AC, 60Hz.

(1) 50W R20, 50W PAR20 or 45W PAR16 max.

Fixture is thermally protected.

Quick connect, push-in wire connectors provided.

Approved for through circuit wiring. Maximum of (8) No. 12 AWG branch circuit conductors (4 in, 4 out).

Pre-wired junction box with spring latch access plates.

Junction Box has (6) 1/2" pry-outs, (1) 1/2" - 3/4" concentric pry-out and (4) Romex pry-outs.

Adjustable lamp socket, vertical position.

Trims

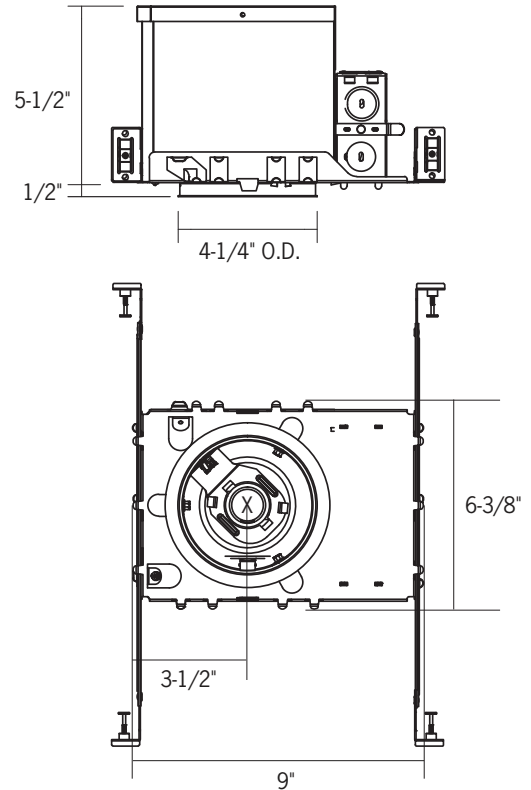
Many different trims options are available to complement any design style. See "Trims for 4" Line Voltage Housings" spec sheet for selection and ordering information.

Warranty

This fixture is covered by ConTech's full one year replacement guarantee after date of purchase.

Listing

cCSAus Certified. Suitable for damp locations.



Ordering Information

Example Order:

Housing

RL20-IC

Trims

For Trims, see "Trims for 4" Line Voltage Housings" spec sheet.

Options

HB-20 - 20" T-Bar Hanger Set
HB-30 - 30" T-Bar Hanger Set
RL20 Converter - Converts 4" Incandescent Recessed Housings for 120V MR16 Halogen Lamps

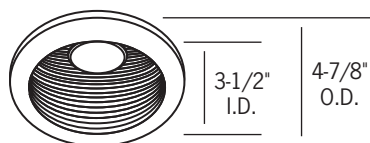
Trims for 4" Line Voltage RL20 Incandescent Recessed Housings

All trims are compatible with 4 Inch Line Voltage Incandescent Recessed Housings: RL-20, RL20-IC, RL20-R, RL20-SA-R.

All trims have white trim finish unless specified.

All trims are cCSAus certified.

All trims are suitable for damp locations; only shower trims are listed for wet locations.



CTR2001-P

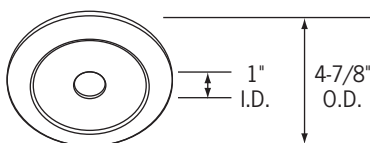
Black Baffled Downlight

CTR2001W-P

White Baffled Downlight

All steel construction. (3) heat treated spring steel mounting clips. Black socket aiming bracket with screws (provided in carton).

Max Lamp: 50W R20, 50W PAR20, 45W PAR16

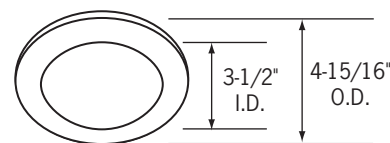


CTR2005-P

Pin Spot

All steel construction. (3) heat treated spring steel mounting clips. Black socket aiming bracket with screws (provided in carton). Aluminum reflector.

Max Lamp: 50W PAR20

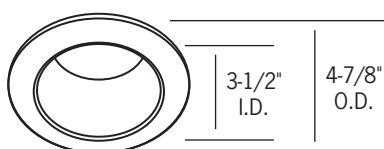


CTR2011FR-(NK, P)

Flat Frosted Glass Lens Shower Light

All steel construction. (3) heat treated spring steel mounting clips. 1/8" thick heavy duty polyethylene sponge gasket. Wet location listed.

Max Lamp: 35W PAR20



CTR2002-BLK-B

Black Specular Aluminum Reflector, Black Trim

CTR2002-CLR-P

Clear Specular Aluminum Reflector

CTR2002-PL-P

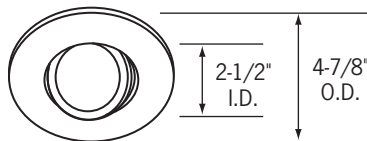
Platinum Aluminum Reflector

CTR2002-WHT-P

White Specular Aluminum Reflector

All steel construction. (3) heat treated spring steel mounting clips. Black socket aiming bracket with screws (provided in carton).

Max Lamp: 50W R20, 50W PAR20, 45W PAR16, 40W A15

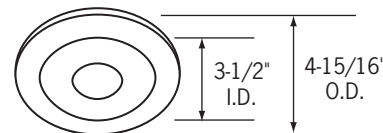


CTR2007-(P, B, NK)

Surface Adjustable

28° vertical adjustment. All steel construction. (3) heat treated spring steel mounting clips. Lamp retaining sweep spring clip.

Max Lamp: 50W PAR20

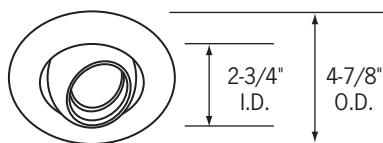


CTR2011-PH-(NK, P)

Flat Frosted Glass Lens Shower Light with Clear Pin Hole

All steel construction. (3) heat treated spring steel mounting clips. 1/8" thick heavy duty polyethylene sponge gasket. Wet location listed.

Max Lamp: 35W PAR20

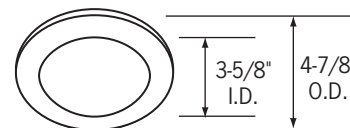


CTR2008-P

Eyeball

30° vertical adjustment. All steel construction. (3) heat treated spring steel mounting clips.

Max Lamp: 50W R20, 50W PAR20, 45W PAR16



CTR2012-P

Flat Alabite Glass Lens Shower Light

All steel construction. (3) heat treated spring steel mounting clips. 1/8" thick heavy duty polyethylene sponge gasket. Wet location listed.

Max Lamp: 35W PAR20



CTR2003-P

Scoop Wall Wash

All steel construction. (3) heat treated spring steel mounting clips. Black socket aiming bracket with screws (provided in carton).

Max Lamp: 30W R20, 30W PAR20, 35W PAR16

1-1/2" x 3-1/2" Aperture

Reflector/Trim Finishes

Reflector Finish Options:

BLK - Black
CLR - Clear

WHT - White
PL - Platinum

Trim Finish Codes:

B - Black
NK - Brushed Nickel

P - White
S - Silver